

B U S I N E S S

at the

MIDDLETON LODGE ESTATE





A place where ideas are created and plans come to life.

From a meeting of two to a conference of 200, the estate has a selection of spaces for you to present, discuss and breakout.

Providing the ideal backdrop for your business needs, from events, conferences, meetings to interviews, training days and team motivational away days.



ESTATE LOCATIONS

Main House

15 bedrooms, four Reception Rooms & Cellar Bar

Fig House

*A large open space with private bar and terrace
opening out onto the Walled Garden*

Forge

*The latest restaurant to the estate, complete with large
dining room, private bar and spacious lounge*

Farmhouse

*The six bedroom farmhouse with communal lounge,
kitchen and dining area, for up to 10 guests*

Coach House

*Relaxed restaurant with two private dining
rooms and a comfy lounge*



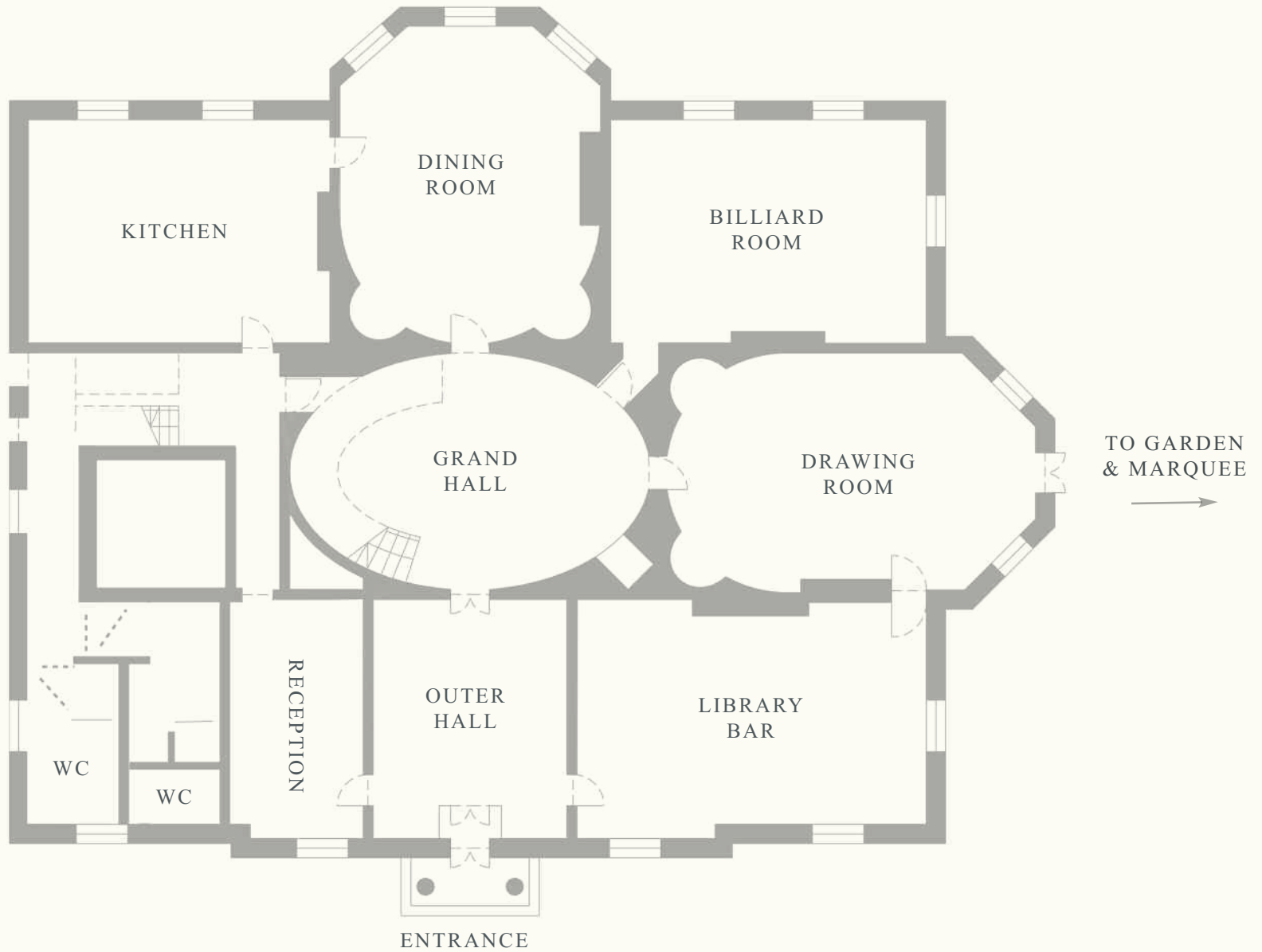


THE MAIN HOUSE

With space for 50 delegates, the Main House has four large reception rooms, 15 bedrooms and a restored cellar bar. Rooms can be hired together or separately; larger groups can be hosted in the Garden Marquee with space for 200 guests.

The Main House is ideal for individual meetings, team away days and large corporate events.

MAIN HOUSE
GROUND FLOOR PLAN





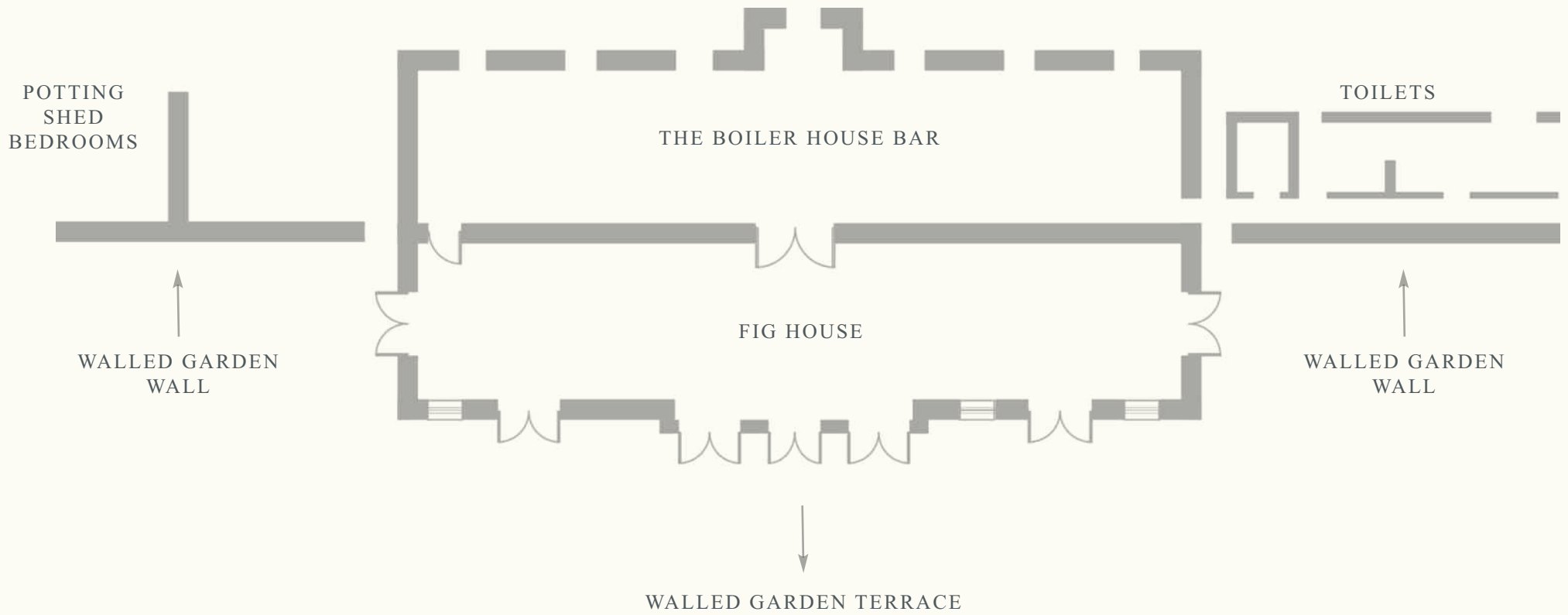


THE FIG HOUSE & WALLED GARDEN

A restored space with room for up to 120 guests. Large floor to ceiling doors fill the space with natural light and open onto the two acre Walled Garden designed by Tom Stuart-Smith.

The adjoining Boiler House bar creates the perfect breakout space, complete with comfy sofas and laid back armchairs.

FIG HOUSE
FLOOR PLAN



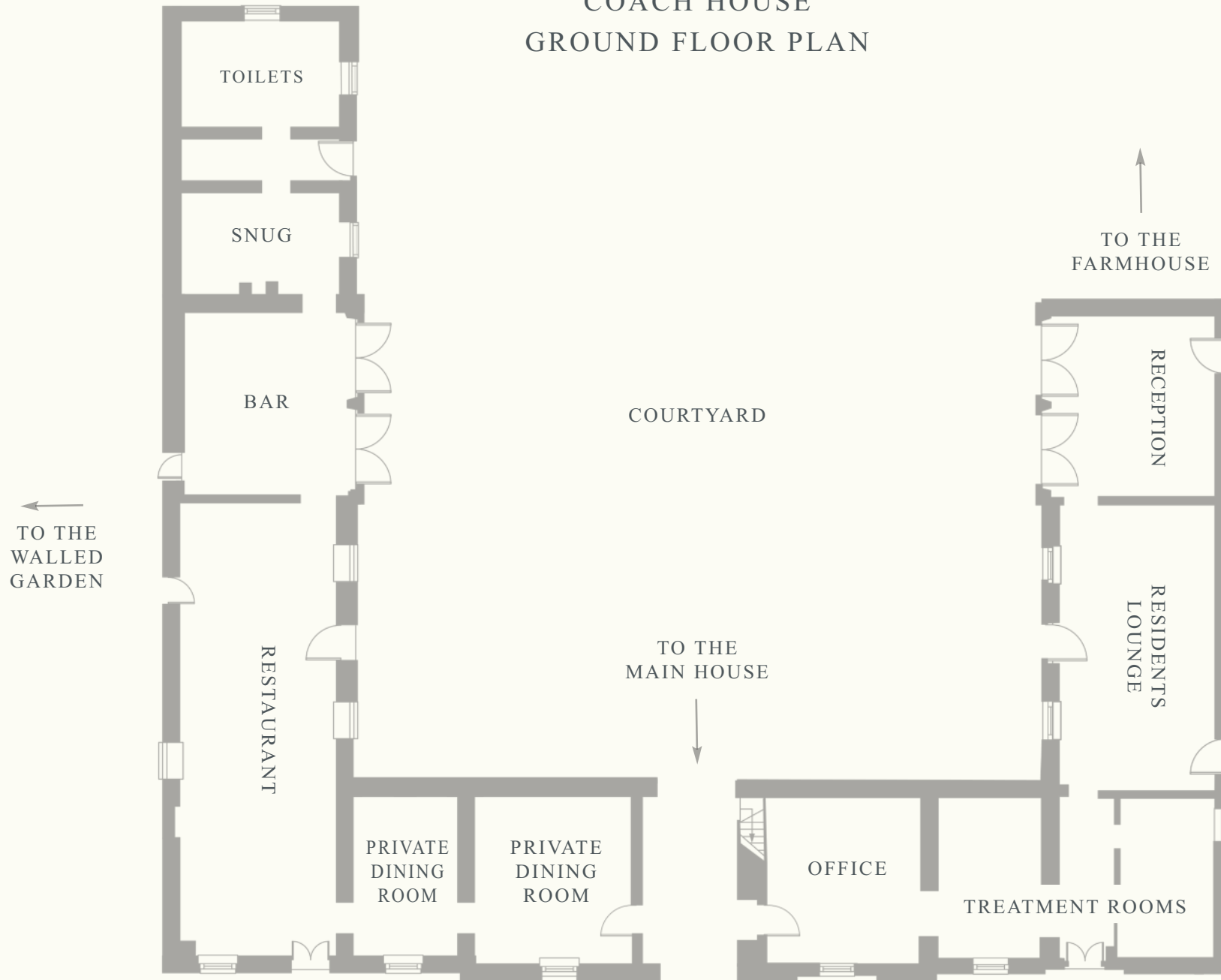


THE COACH HOUSE

A relaxed restaurant, serving a laid back all day menu inspired by produce from our Kitchen Garden and Yorkshire countryside. Here you'll find two private dining rooms and a lounge, ideal for meetings of up to 10 people.



COACH HOUSE
GROUND FLOOR PLAN



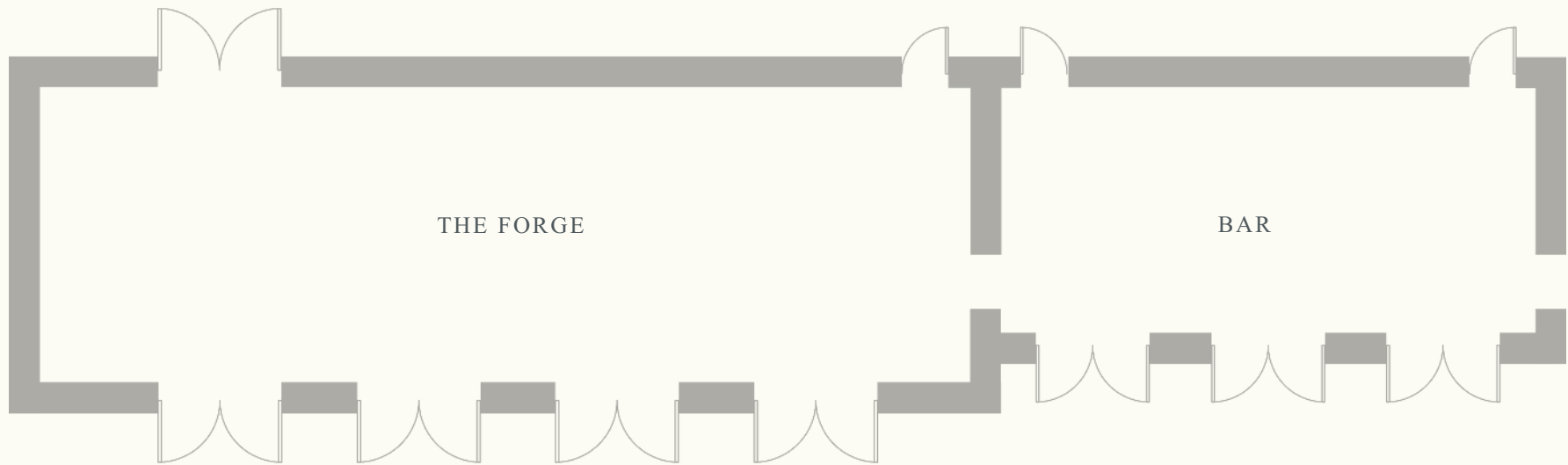


FORGE & THE POOL LOUNGE

Tucked away behind the Farmhouse you'll find the elemental restaurant, Forge with adjoining pool lounge. Open Wednesday to Saturday for evening reservations only, the restaurant serves a five and nine-course tasting menu, inspired by the estate. Throughout the day it can be made into your very own meeting space, with the lounge as a comfy breakout area.



FORGE
FLOOR PLAN



TO THE
FARMHOUSE



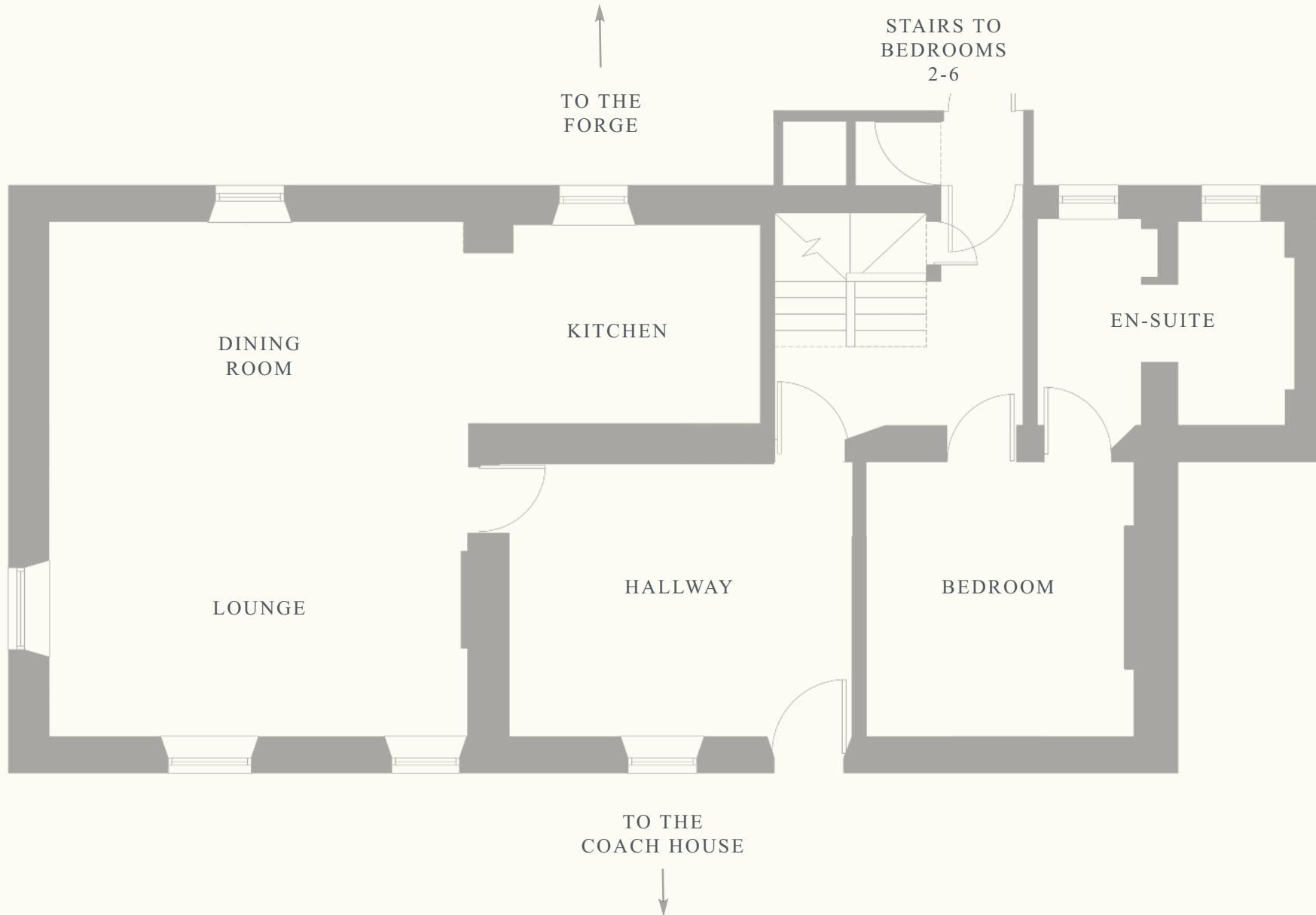


FARMHOUSE

The restored Farmhouse is set in its own private garden, surrounded by a wild meadow. On the ground floor there is an open plan eat-in kitchen, dining area for 10 people and lounge, with six bedrooms spread over the ground floor, first floor and attic. It's perfect for tranquil, smaller meetings.



FARMHOUSE
GROUND FLOOR PLAN





DAY DELEGATE

RATES

£55pp

For those who require a full day meeting space we offer day delegate rates which includes the following...

*Your meeting room will be set up to your specific layouts.
Our business team will work with you to arrange all details prior to the event.*

Included in your rate:

Pen, notepad, projector or TV with laptop connection and flipchart

Designated Coordinator for the event

Signage

Still water and fresh fruit

Tea and Coffee station for the duration of your meeting

Morning break with homemade biscuits

Light lunch - seasonal dishes from the Estate

Afternoon break with cake of the day

Food upgrades:

Breakfast/Brunch options and additional upgrades available

- please ask our business team for more information



NOURISH THE MIND

Our estate chef team have created a seasonal business menu with the aim to keep your team nourished and energised for the rest of the working day.





WORKSHOPS & RETREATS

Our business clients work closely with our business team to create relevant, productive and effective workshops and retreats for their clients or team.

From traditional sports days, foraging and cookery classes to cricket matches or health and wellbeing workshops, the estate can host a range of activities and events. Please speak to our business sales team for more information.



ACCOMMODATION

From the Main House to the Dairy there's 45 bedrooms dotted across the estate. Each individually designed with handpicked interiors, large bathtubs and the comfiest of beds, they're the perfect peaceful bolthole to retreat to after a hard day's work.





HOW TO FIND US

Middleton Lodge

Kneeton Lane

Middleton Tyas

Richmond

North Yorkshire

DL10 6NJ

01325 377977

events@middletonlodge.co.uk

We are five minutes from the Scotch Corner junction on the A1. Ten minutes from Richmond, forty minutes from Newcastle, one hour from York, and ten minutes from Darlington Train Station (2.5 hours to London via train).



MIDDLETON LODGE, RICHMOND, DL10 6NJ

events@middletonlodge.co.uk | 01325 377977 | www.middletonlodge.co.uk